



# FACILITIES FOR WOMEN ON CAMPUS

## 1. Safety and Security in the Campus

### Implementation of CCTV cameras

To safeguard the SNM community, the College has implemented a number of safety and security precautions. The college is continuously being watched over with the aid of 49 CCTV cameras to keep an eye on what is happening around the campus. The location of the women's hostel on the college campus ensures the safety of the residents.



*A camera placed at the college office*



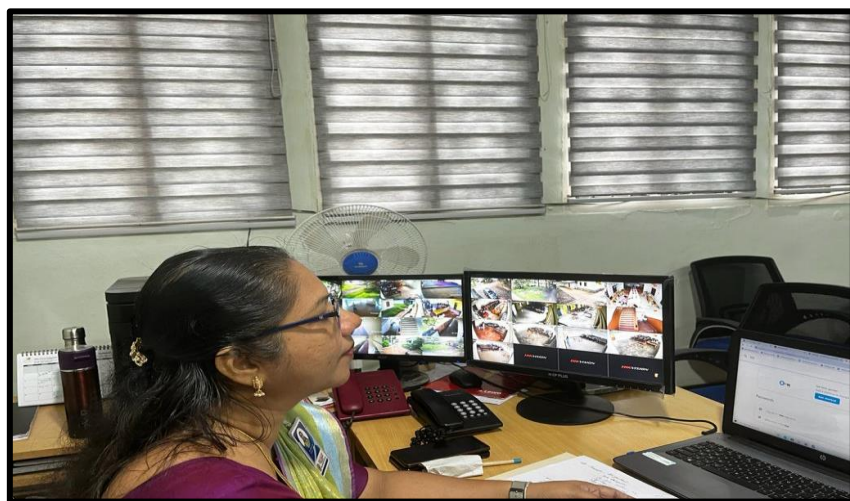
*Placed at the portico of the college*



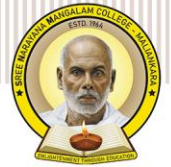
*Placed in front of the Principal's room*



*Placed at the CB Block*



*Surveillance of all cameras in Principal's room*



## Availability of Full-Time Security Personnel

On the campus and hostel, watchmen are present around the clock. To maintain a secure and welcoming learning environment, security personnel are essential in universities. There are 4 watchmen available on the campus.



## Internal Complaint Committee

In accordance with UGC guidelines, the college has also established an Internal Complaint Committee (ICC) to support female staff members and students who are experiencing various forms of harassment.

[Internal Complaint Committee](#)

## Uniform and ID cards

Students are required to wear ID cards and uniforms on campus as part of security measures. ID cards typically include a photograph and essential personal information. Staff also are required to wear ID card on the campus.



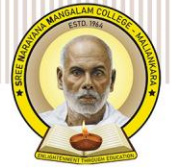
*Students wearing uniform and ID card*



*Staff ID Card*

## **2. Counselling unit**

A counselling section is running in the college with the help of a competent counsellor to help students build their self-confidence to deal with obstacles. We are providing each needy student with individualized guidance and support with the aid of the class mentors.



### **3. College Women's Hostel**

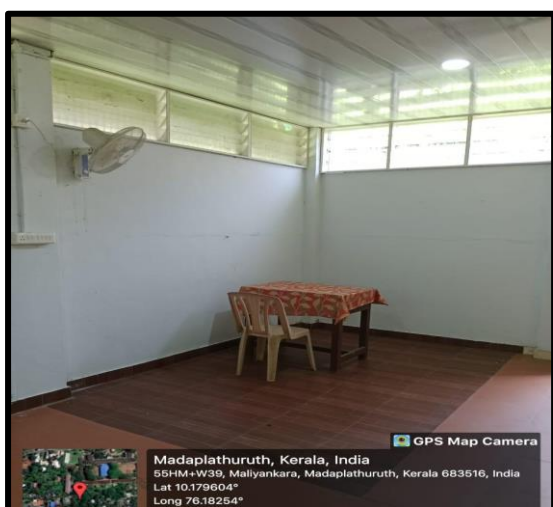
The college takes pride in providing comfortable and secure accommodation for female students and female staff directly within the campus premises. With a capacity to house up to 70 people, the hostel is conveniently divided into two blocks, ensuring a conducive living environment. To further enhance the well-being of its residents, a dedicated Hostel Matron is available round the clock, offering assistance and promptly addressing any concerns that may arise. Additionally, the college's commitment to student welfare is underscored by the presence of a senior faculty member who serves as the College Warden for the hostel. This experienced warden ensures that students' needs are met, oversees the smooth functioning of the hostel, and fosters a nurturing atmosphere that promotes personal and academic growth.

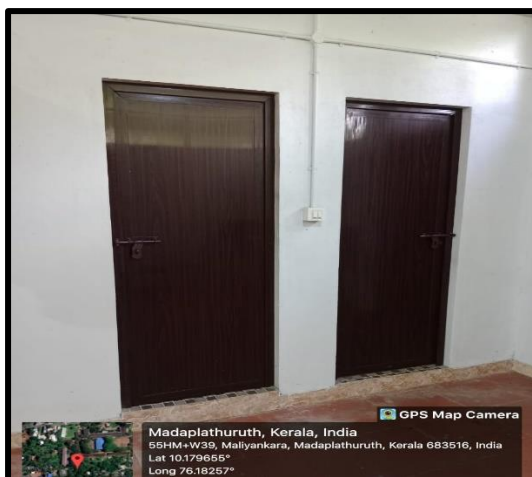




## 4. Common Room

The college has a common room exclusively for girls. The room is meant for the welfare of girl students as well as female staff inside the campus. The room has comfortable mattresses, a drinking water facility, a reading nook, toilets, and bathroom. The restroom is equipped with a vending machine, an incinerator, and amenities for entertainment.





## 5. Fitness Centre

The college's fitness centre is essential to encouraging a fit and active lifestyle among the student community. A vital resource for the wellbeing of students, and staff, it offers a variety of facilities and services, as well as a dedication to safety. The centre makes a priceless contribution to the campus community's physical and mental well-being. The fitness centre has a fully furnished gym with advanced cardio and weight training equipment. This includes weightlifting equipment like treadmills, ellipticals, and free weights.





## 6. Unisex Toilet

